

DOUBLE SPINDLE VERTICAL LATHE MORANDO CTV 40



CNC: SIEMENS 840C

YEAR: 1996

TECHNICAL DATA:

Turning diameter: 600 - 450 mm

Turning height: 150 - 250 mm

X axis stroke: 500 mm

Z axis stroke: 400 mm

No. 2 SPINDLE

Chuck diameter: 400 mm

Spindle taper: ASA 11

Spindle speed: 2200 rpm

Motor power: 42 kw

Rapids: 20.000 mm/1"

NO. 2 TURRETS: 6+6 Toolholders (Capto C5)

The machine is complete with a gantry for load and upload of pieces and has 2 chucks, 2 turrets and several toolholders.

CK Machine Tools srl

CK Machine Tools srl
Via G. Galilei, 5
24050 Spirano (BG)
Tel. 334.5313384

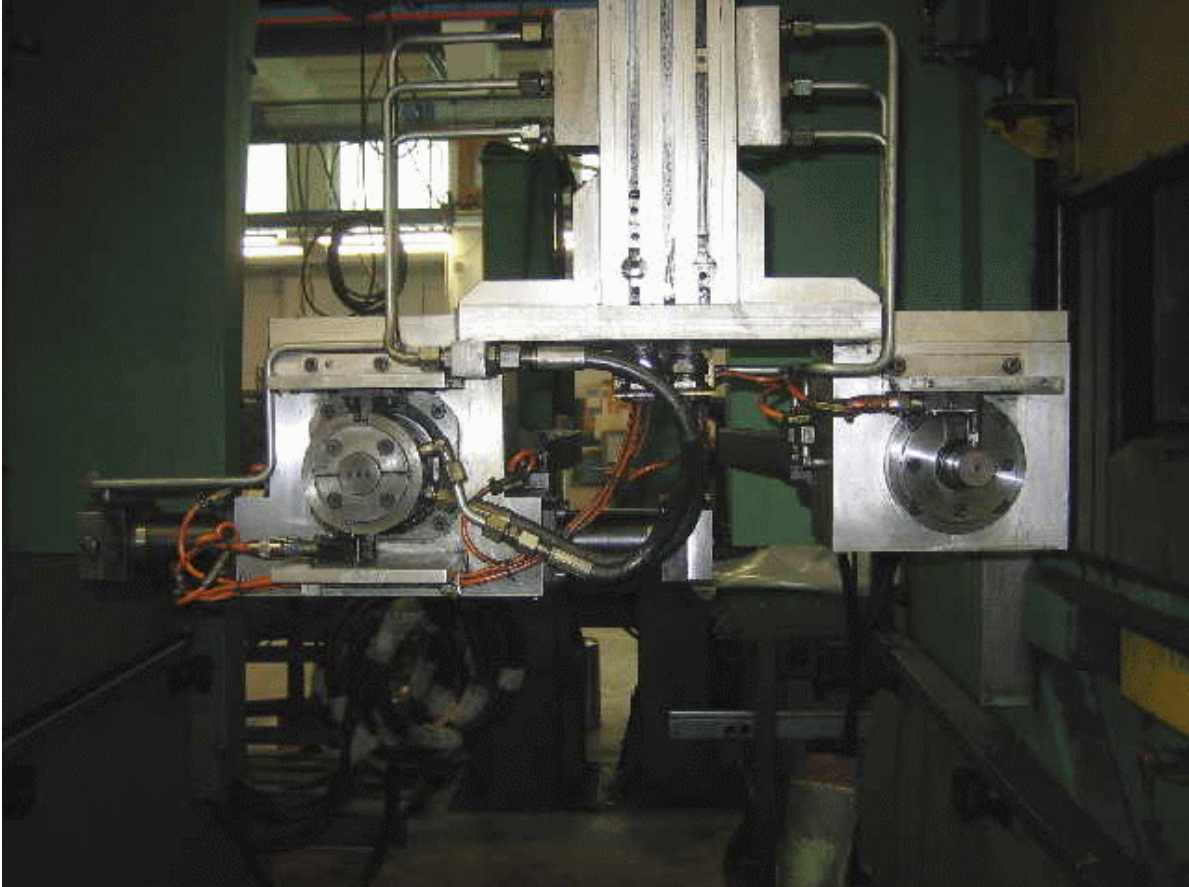
Cod. Fiscale e P.IVA: 01386770190
C.C.I.A.A. di Bergamo N.REA BG-425337
Pec: chinox@pec.it
www.ckmachinetools.it - info@ckmachinetools.it



CK Machine Tools srl

CK Machine Tools srl
Via G. Galilei, 5
24050 Spirano (BG)
Tel. 334.5313384

Cod. Fiscale e P.IVA: 01386770190
C.C.I.A.A. di Bergamo N.REA BG-425337
Pec: chinox@pec.it
www.ckmachinetools.it - info@ckmachinetools.it



CK Machine Tools srl

CK Machine Tools srl
Via G. Galilei, 5
24050 Spirano (BG)
Tel. 334.5313384

Cod. Fiscale e P.IVA: 01386770190
C.C.I.A.A. di Bergamo N.REA BG-425337
Pec: chinox@pec.it
www.ckmachinetools.it - info@ckmachinetools.it

